



CJKOS for PalmOS5 V4.63

Introduction

English
Simplified Chinese
Traditional Chinese

Chinese,Japanese,Korean Operation System Readme

Thanks for choosing CJKOS, you're suggested to read the following items before taking CJKOS into use:

▶ Index

1. [Overview](#)
2. [System Requirements](#)
3. [Installation](#)
 - [How to upgrade CJKOS](#)
 - [How to remove the earlier version of CJKOS](#)
 - [Install CJKOS with CJKOS install application](#)
 - [Install CJKOS with install tool provided on the Palm desktop](#)
 - [Put database into Flash ROM](#)
 - [Put font into VFS expansion card](#)
 - [Documents for CJKOS](#)
 - [Sample Installation](#)
4. [Usage](#)
 - [How to start CJKOS](#)
 - [CJKOS System Setup, Enhanced Features Setup, Input Methods Setup](#)
 - [CJKOS Database Manager](#)
 - [Start Input Methods, Input Methods Interface, Tool Bar, Other Buttons, Additional notes about Input Methods](#)
 - [Phrase Input, Associated Input, Reverse-Association](#)
 - [Manage phrase databases, Add new phrases, Delete phrases, Get custom-built phrases](#)
 - [Smart Prioritize Word, Phrase](#)
 - [Translate Chinese address into English](#)
 - [How to get original codes](#)
 - [Use Icon Words, Icon Words List](#)
 - [English/CJK Punctuation and symbols Table](#)
 - [Apply external keyboard](#)
 - [Apply SONY CLIE JogDial](#)
5. [Registration](#)
6. [Release History and Updates](#)
7. [FAQ](#)
8. [Future Plans](#)
9. [Disclaimer and legal stuff](#)
10. [Contacts](#)

▶ Overview



CJKOS(Chinese, Japanese, Korean Operation System) is used to enhance the English version of PalmOS to become a multi-language system, supporting Chinese, Japanese and Korean.

Supports displaying Chinese, Japanese and Korean words. CJKOS will:

- Intelligently identify and display simultaneously both the Simplified(GB-2312) and the Traditional(BIG-5) Chinese words.
- Intelligently identify and display simultaneously both EUC-JIS and Shift-JIS Japanese words.
- Display Korean KSC-5601.

Localizer: Supports a native-language interface for PalmOS. At present, only Simplified and Traditional Chinese interfaces are available. [Screen shots](#).

Supports the input of Chinese words. The followings input methods are available:

- For Traditional Chinese: CangJie[sometimes called Changjie], HongKong CangJie, Easy, ZhuYin, Cantonese, HanYuPinYin, TongYongPinYin, ZhuYin 2, WG PinYin, XuShi, DaYi, Array, Icon Word, Punctuation and Symbol, Japanese Hiragana and Katakana.
- For Simplified Chinese: WuBiZiXing, PinYin, Double-PinYin, ZhuYin, Cantonese, Shape-code, Zheng-code, Icon Word, Punctuation and Symbol, Japanese Hiragana and Katakana.
- For Korean: Korean Word, Icon Word, Japanese Hiragana and Katakana.
- For Japanese: Icon Word, Japanese Hiragana and Katakana.
- Other Input Methods available on each specific language platform, customized by users.

Various Font support:

- o Supports **Standard Font**, **Bold Font**, **Large Font** and **Large Bold Font**.
- o Supports Chinese and Japanese **10X10** small Font.

Special Font Support:

- o 12X12 **FangSong** and **Kai** Fonts Simplified Chinese.
- o 12X12 **XiMing** and **BiaoKai** Font Traditional Chinese.
- o SUPPORT HKSCS(Hong Kong Supplementary Character Set) FONTS (4702), and All of Traditional Chinese words and 4295 HKSCS words can be input with "HongKong Cangjie" Input Method.

Phrase Association, Reverse-Association and Phrase Input.

Supports to directly add or to delete phrases on the handheld devices.

Smart Prioritizes Words and Phrases: System can study on itself and put the frequently-used words or phrases in the front of the list.

Supports the feature of "Icon word", so that icons can be pasted among the characters. It can help to categorize the materials, act as a reminder or note, etc.

Supports external keyboard: Input Methods can be started on external keyboards. The available external keyboards include GoType keyboard, Palm Portale Keyboard.

Supports JogDial.

Match Precisely.

Translates Chinese address into English.

Get the original codes

Database manager: Easily delete any unnecessary databases (CJKOS system files), or monitor databases' status.

Other advanced features:

- o Adjustable spacing between the words.
- o Enhance word wrap.
- o Hide underlines in the text.
- o Enhance sorting.
- o Enhanced Fonts Select Dialog.
- o Enhanced CJK Date Format.

► System Requirements



Hardware: Available for Palm or compatible devices running Palm OS 5 , i.e. Palm Tungsten T, SONY CLIE PEG-NX70V/U .

Memory usage: You can **customize** it as you need. It takes only 190KB of memory to install the Main Program and the 10X10 Simplified Chinese Full font. The amount of the memory needed will vary according to the databases you choose to install. You can use the "CJKOS Database Manager " to easily install any new databases or to delete any databases no longer in use. For further details, please refer to [Installation](#) and [Sample Installation](#). **It is strongly recommended that you only install the required databases.**

► Installation



Before installing CJKOS, please be sure you've installed Palm Desktop software. If not, please read the item on "Palm Desktop" in the reference for the handheld device.

CJKOS databases can be installed with CJKOS install application (Install.exe) or install tools provided on the Palm desktop or any other compatible ones. You can install only those databases you need. **To make CJKOS work, you need to install the Main program and at least one of the Font Databases (10X10 or 12X12)**

How to upgrade CJKOS:

This feature is only available for those who have ever installed earlier version of CJKOS. If no specific comments for upgrading are announced in the document, you can only install those updated and additional databases. **Note: Be sure CJKOS is deactivated before installing any databases.** If you want upgrade to CJKOS4.0, please remove the earlier version of CJKOS first.

How to remove the earlier version of CJKOS:

Please firstly install the file cManager.PRC in the directory of CJKOS to your handheld device. It's a kind of software for managing CJKOS documents.



After installation, please shut down CJKOS on your handheld device , then click on the icon **cManager** to start the software cManager.



Select the item on

Options->Delete CJKOS.

Press [Yes], system will start to delete all of CJKOS affiliate files including main program, fonts, Input methods, phrase databases and localizer buddies files on your handheld device.

At the end of deleting, you'll be asked if you'll reset the system, Please click on [Reset Now!].

After restarting your machine, you've totally removed all CJKOS files from your handheld device. Now you can follow the below steps to go on with installation:

Install CJKOS with CJKOS install application:

Run the install application (Install.exe) in the directory where CJKOS is, as described in the illustration:



Look at the following image:



Notes:

Interface Language - The Install Application interface can be set to default to any of the three languages: English, Simplified Chinese and Traditional Chinese.

Palm User Name - Choose the unique username on the Palm where CJKOS will be installed and run.

Require Memory - Displays the total amount of the memory needed for installing all customized files. Be sure to have sufficient memory on the Palm for installation.

Main program - Ones who have ever installed CJKOS manager application needn't trigger on the item of CJKOS manager.

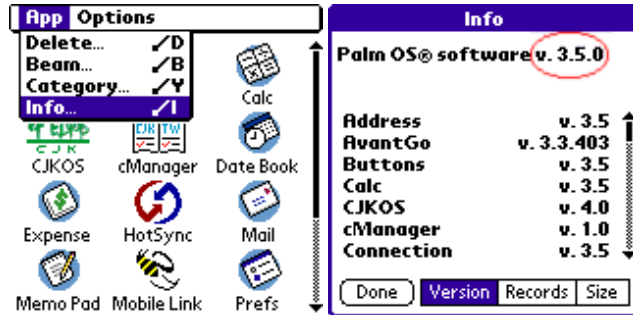
Fonts - If the memory is not sufficient enough to install more, you can only install small fonts. [con word] is the font for "Icon Word Input Methods". Only when you request to input icon words on your handheld device, please install this font.

Input Method - Please trigger on your favorite Input Methods. With "Punctuation and Symbol" Input method installed, you can input more than 200 symbols on your handheld device. also you can install "Icon Word" input method if you've ever installed Icon Word font. If you request to translate Chinese address into English, you can choose to install PinYin Input Method (you can read the further information on PinYin Input Method in this document).

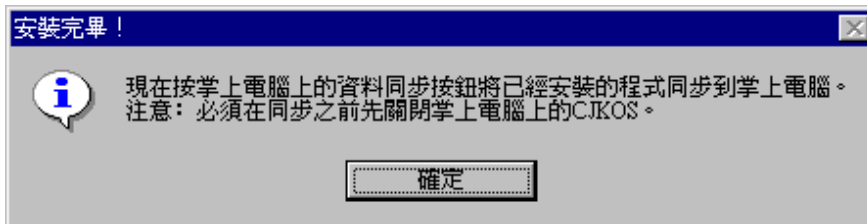
Phrase - Used to support phrase association, Reverse-Association and phrase Input to speed phrase inputting. If you're used to

inputting words on your handheld device, you're suggested to install it.

Localizer - It's used to change the English interfaces of those built-in applications on your handheld device into native-language interfaces by triggering on the item which matches the system on your handheld device. Now both Traditional and Simplified Chinese interfaces are available. To make sure of the version of system on your handheld device, please read the following reference or ask your vendor for details.



Select the contents you need, then press the "Install" button, there appear:



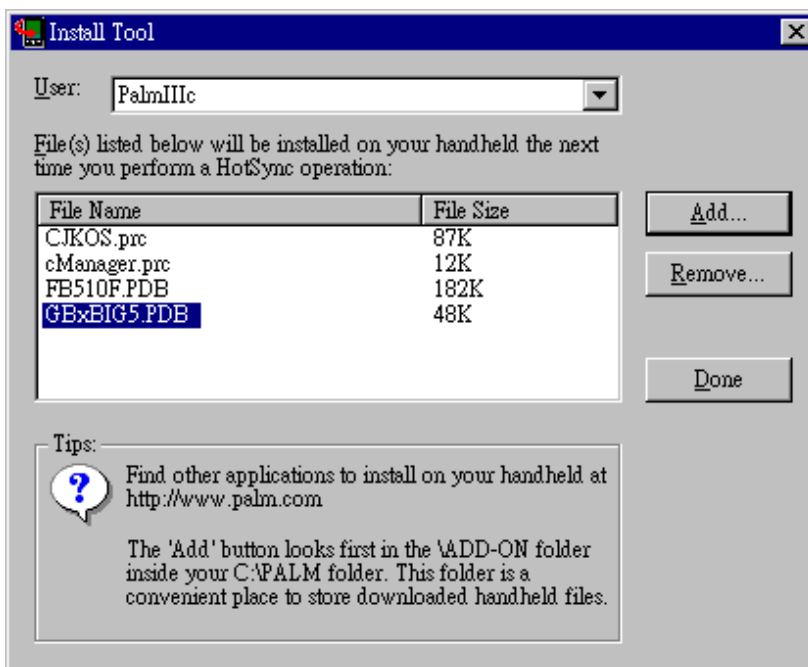
After reading, Please press the button "OK".

Now you can start to install files by clicking on the button HotSync located on your handheld device. If you've ever installed earlier version of CJKOS, please be sure to shut down it before the action of "HotSync".

To get the detailed information on databases, see the section "[Documents for CJKOS](#)".

Install CJKOS with install tool provided on the Palm desktop:

As the advanced users, you can install CJKOS with install tool provided on the Palm Desktop as follows:



Put database into Flash ROM:

On some handheld devices with Flash ROM, there are some free Flash ROM (about 800 KB) except for that occupied by Palm OS. CJKOS

can be put into these spare Flash ROM with support of FlashPro or JackFlash.

All databases in CJKOS package can be put into Flash Module on Visor, in this way, CJKOS occupy less or none of RAM on your device.

Only those consistent databases are suggested to be put into Flash ROM. I.e, if you want to active the feature "Add New Phrases", the phrase database cannot be put into Flash ROM.

Note: Before moving CJKOS files into Flash ROM or Flash Module, please be sure to shut down CJKOS in advance. While CJKOS on Flash Module is running, If you want to unplug Flash Module, Please be sure to shut down CJKOS before unplugging Flash Module.

Put font into VFS expansion card:

If you are using Palm with VFS expansion card, you can put some or all of fonts into the card under the directory of /PALM/CJKOS/FONT/. You can move fonts from RAM to the card with cManager, vice versa.



Close CJKOS , click cManager icon to start cManager.



select

Options->Move Font to Card and Options->Move Font to RAM to move fonts.

Note:

1. CJKOS get fonts faster from RAM than from Card. It's supposed to put frequently-used fonts into RAM, I.e. 16X16 fonts on High desity Palm.
2. If there is any font has been put on the card, CJKOS cannot startup automatically at RESET, because the card is invisible to system when RESET.

Documents for CJKOS:

Readme	index.htm - CJKOS Readme	
Install App	Install.exe - CJKOS install application (Windows)	
Main program	CJKOS.PRC - CJKOS main program	
	cManager.prc - CJKOS manager application	
GB-BIG5 Conversion table	GBxBIG5.PDB - Converts between GB-2312 and BIG-5; also contains data for the system to correctly differentiate between Simplified and Traditional Chinese.For displaying GB Chinese in BIG5 (Traditional) Font without the GB database installed, or vice versa. Also aids the system to identify GB and Big5 Chinese.	
BIG5->GBK Conversion table	BIG52GBK.PDB - Convert BIG-5 to GBK for displaying BIG5 in GBK Font without the BIG5 font database installed.	
Unicode Conversion table	Running on Palm OS 5.0 or higher to support Unicode filenames on VFS card (SD, MS) and Quickoffice Premier 7.0.	
	UCS_ChineseGB.prc	Unicode to Simplified Chinese
	UCS_ChineseGBK.prc	Unicode to Chinese GBK
	UCS_ChineseBIG5.prc	Unicode to Traditional Chinese
	UCS_JapaneseJIS.prc	Unicode to Japanese
	UCS_KoreanKSC.prc	Unicode to Korean

Font Database
 FONT*. *

 Naming system is: **FCPSIX**.PDB

CP CharSet, **GB**(Simplified Chinese GB2312), **GBK**(Chinese GBK), **B5**(Traditional Chinese BIG5), **JIS** (Japanese EUC-JIS and Shift-JIS), **KSC**(Korean KSC-5601)

SI FontSize, **12**(12X12 Font) or **10**(10X10 small font)

X Size, **F**(Full Version), **L**(Light Version - Standard Font only, saving memory), **only one of them may be installed at one time.**

FGB10F.PDB	10X10 Simplified Chinese	简体中文小字	8178 words
FGB10L.PDB			5170 words
FGB12F.PDB	12X12 Simplified Chinese	简体中文	8178 words
FGB12L.PDB			5170 words
FGB16F.PDB	16X16 Simplified Chinese	简体中文	8178 words, for HandEra,Sony CLIE 700/710C
FGB24F.PDB	24X24 Simplified Chinese	简体中文	8178 words, for Sony CLIE 700/710C
FGBK10F.PDB	10X10 Chinese GBK	简体中文小字	About 24066 words
FGBK12F.PDB	12X12 Chinese GBK	简体中文	About 24066 words
FGBK16F.PDB	16X16 Chinese GBK	简体中文	About 24066 words
FGBK24F.PDB	24X24 Chinese GBK	简体中文	About 24066 words
FB510F.PDB	10X10 Traditional Chinese	繁體中文小字	13973 words
FB510L.PDB			6280 words
FB512F.PDB	12X12 Traditional Chinese	繁體中文	13973 words
FB512L.PDB			6280 words
FB516F.PDB	16X16 Traditional Chinese	繁體中文	13973 words, for HandEra,Sony CLIE 700/710C
FB524F.PDB	24X24 Traditional Chinese	繁體中文	13973 words, for Sony CLIE 700/710C
FHK10F.PDB	10X10 HongKong Font	冇咩咗吓	Used to display 4702 HongKong additional words. It should be used with Big5 CharSet together.
FHK12F.PDB	12X12 HongKong Font	冇咩咗吓	
FHK16F.PDB	16X16 HongKong Font		for HandEra,Sony CLIE 700/710C
FHK24F.PDB	24X24 HongKong Font		for Sony CLIE 700/710C
FJIS12F.PDB	12X12 Japanese	東の空が	7896 words
FJIS12L.PDB			4418 words
FJIS10F.PDB	10X10 Japanese	東の空が	7896 words
FJIS10L.PDB			4418 words
FKSC12F.PDB	12X12 Korean	뽕뽕뽕뽕	8836 words
FKSC12L.PDB			3760 words
FIW10.PDB	10X10 icon word font	☺☹☺☹☺☹☺☹☺☹	

Specific font database
 FONTEXT*. *

FGB12STF.PDB		宋体简体中文	8178 words
FGB12STL.PDB	12X12 Simplified Chinese SongTi Font		5170 words
FGB12FSF.PDB	12X12 Simplified Chinese FangSong Font	仿宋简体中文	8178 words
FGB12FSL.PDB			5170 words
FGB12KTF.PDB		楷体简体中文	8178 words
FGB12KTL.PDB	12X12 Simplified Chinese Kai Font		5170 words
FB512XMF.PDB		細明繁體中文	13973 words
FB512XML.PDB	12X12 Traditional Chinese XiMing Font		6280 words
FB512KBF.PDB	12X12 Traditional Chinese KaiBiao Font	楷標繁體中文	13973 words
FB512KBL.PDB			6280 words

Note: Only one of the same size of fonts for a certain CharSet could be allowed to be chosen at one time. I.e. With the Character Set of Traditional Chinese, you can only choose one of Traditional Chinese 12X12 fonts.

Input Methods

IME*.*

Simplified Chinese input methods:

IMGBQPF.PDB PinYin
 IMGBSPF.PDB Double-PinYin
 IMGBWBF.PDB WuBiZiXing
 IMGBZYF.PDB ZhuYin
 IMGBCTF.PDB Cantonese
 IMGBICON.PDB Icon word - Associated with icon font Input Method, there're 155 icon words are available.
 IMGBJP.PDB Hiragana & Katakana - Input Japanese Hiragana and Katakana under the ChineseGB CharSet.
 IMGBSYM.PDB Punctuation & Symbol
 IMGBBXF.PDB Shape-code
 IMGBZMF.PDB Zheng-code

GBK Chinese input methods:

IMGBKQPF.PDB GBK PinYin

Traditional Chinese input methods:

IMB5CJF.PDB CangJie - Supports CangJie and Easy entry methods
 IMB5HKCJF.PDB Hongkong CangJie - Include Traditional Chinese words and 4295 HongKong additional words. You can only choose one of CangJie and HongKong CangJie.
 IMB5ZYF.PDB ZhuYin
 IMB5CTF.PDB Cantonese
 IMB5PYF.PDB HanYuPinYin
 IMB5TYPYF.PDB TongYongPinYin
 IMB5ZY2F.PDB ZhuYin 2
 IMB5WGF.PDB Wade-Gilos PinYin
 IMB5XUF.PDB Xu
 IMB5DYF.PDB DaYi
 IMB5ArrayF.PDB Array
 IMB5ICON.PDB Icon word - Associated with Icon font Input method, 155 icons can be input.
 IMB5JP.PDB Hiragana & Katakana - Input Japanese Hiragana and Katakana under the ChineseBig5 CharSet.
 IMB5SYM.PDB Punctuation & Symbol

Japanese input methods:

IMSJKA.PDB Shift-JIS Hiragana & Katakana - Input Japanese Hiragana and Katakana under the Japanese Shift-JIS CharSet.
 IMSJICON.PDB Shift-JIS icon word - Associated with Icon font Input method, 155 icons can be input.
 IMEJKA.PDB EUC-JIS Hiragana & Katakana - Input Japanese Hiragana and Katakana under the Japanese EUC-JIS CharSet.
 IMEJICON.PDB EUC-JIS icon word - Associated with Icon font Input method, 155 icons can be input.

Korean input methods:

IMKSCU.PDB Korean words
 IMKSCICON.PDB icon word - Associated with Icon font Input method, 155 icons can be input.
 IMKSCJP.PDB Hiragana & Katakana - Input Japanese Hiragana and Katakana under the Korean KSC CharSet.
 IMKR.PDB 2 beol-sik (by Sung-ho Han)

Phrase databases

Phrase*.*

PhrGBF.PDB Simplified Chinese phrase Database, 44374 phrases.
 PhrB5F.PDB Traditional Chinese phrase Database, 44577 phrases.
 PhrKSC.PDB Korean phrase Database.

Administration

Manager*.*

lmeMan.exe Input Method Generator, Available only for Windows
 PhrMan.exe Phrase Generator, Available only for Windows

Localizer Buddy

Loc*.*

Localizer Buddy is used to localize (convert the language of) the interface of PalmOS, built-in applications and other kinds of useful applications. Each Buddy is for a specific application, which determines the size of the Buddy. Generally the size is between 0.1KB and 8KB. To localize a certain application, install its corresponding Localizer Buddy in advance. Buddies are optional and may be installed according to preference.

Localizer Buddy Naming System: MF_ **Application** _Ver_ **Version** _ **Language** .prc

Application - Name of the application localized by Buddy in question.

Version - Version of the application localized by this Buddy. Each buddy localizes a specific version of an application.

Language - Language supported by current buddy.

For example:

MF_CJKOS_Ver_2_0_ChineseBIG5.prc - Converts CJKOS 2.0 to Traditional Chinese interface.

MF_System_Ver_v_3_0_ChineseGB.prc - Converts PalmOS 3.0 to Simplified Chinese interface.

MF_Expense_Ver_3_0_ChineseGB.prc - Converts built-in Expense 3.0 to Simplified Chinese interface.

Directories under "Loc":

Subdirectories under this directory are named with the following directory naming system: **Compatible OS_Comppatible Device List**, i.e.

OS20_PalmPilot

OS20_PalmPilot Localizer Buddies for PalmOS2.0 (PalmPilot) and built-in applications.

OS30_PalmIII Localizer Buddies for PalmOS3.0 (PalmIII) and built-in applications.

OS31_PalmV_Vx_IIIx_IIIe Localizer Buddies for PalmOS3.1 (PalmV, Palm Vx, PalmIIIx, PalmIIIe) and built-in applications.

.....

.....

CJKOS Localizer Buddy for CJKOS.

Each directory above can branch into other subdirectories for each language and corresponding Buddies.

Note: So far, only Simplified and Traditional Chinese Localizers for PalmOS and built-in applications are functional.

Sample Installation

Traditional Chinese Small Font - CJKOS.PRC, FB510F.PDB or FB510L.PDB

Basic Traditional Chinese - CJKOS.PRC, FB512F.PDB or FB512L.PDB

Basic Traditional Chinese and small font - CJKOS.PRC, FB512F.PDB or FB512L.PDB, FB510F.PDB or FB510L.PDB

Basic Traditional Chinese Font (Can also be used to display Simplified Chinese) - CJKOS.PRC, GBxBIG5.PDB, FB512F.PDB or FB512L.PDB

Display simultaneously both Simplified and Traditional Chinese - CJKOS.PRC, GBxBIG5.PDB, FB512F.PDB or FB512L.PDB, FGB12F.PDB or FGB12L.PDB

Basic Traditional Chinese Supporting a specific font - CJKOS.PRC, FB512KBF.PDB or FB512KBL.PDB

Basic Traditional Chinese and CangJie/Easy input method - CJKOS.PRC, FB512F.PDB or FB512L.PDB, IMB5CJF.pdb

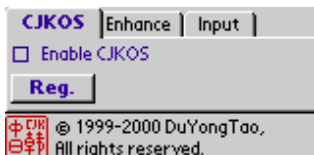
.....

Other options are available as well; feel free to try them out and have fun with the application!

Usage**How to start CJKOS:**

After Installation, click on the icon , this icon  will appear.

Tap to enter the CJKOS Control Center: (Panel version of CJKOS please tap "Prefs->CJKOS")



" **Enable CJK OS** " item will activate the CJKOS Display and Input Function.

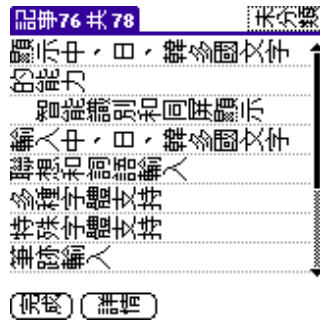
CJKOS Items include:

- CJKOS System Setup
- Enhanced Features Setup
- Input Methods Setup
- CJKOS Database Manager
- Input Methods Interface

CJKOS System Setup:



- o **Enable CJKOS** - Switches on the CJKOS Display and Input Functions.
- o **Char Set** - System Char Set (Simplified Chinese GB, Traditional Chinese BIG5, EUC-JIS Japanese, Shift-JIS Japanese and KSC Korean).
- o **Display** - Display Char Set (Auto, GB or BIG5); only available for Chinese. "Auto"; selects the display Char Set according to smart detection, which can support simultaneously displaying Simplified and Traditional Chinese. Simplified Chinese can also be displayed by using the Traditional Chinese database, and the other way around (the GBxBIG5.PDB Conversion table must be installed).
- o **90** - display CJK Characters with 90 degree ccw as follows:



- o **Smart Detect Char Set** - Available for displaying Chinese and Japanese simultaneously.
- o **Support CJK boldFont** - Support Chinese, Japanese and Korean Bold Font.
- o **Support CJK largeBoldFont** - Support Chinese, Japanese and Korean Large Bold Font.
- o **Reg.** - [Register](#)

Enhanced Features Setup:



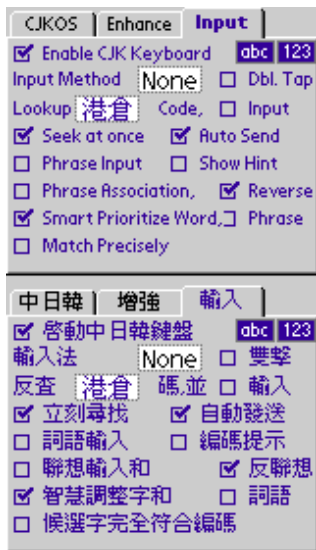
- o **Add Horizontal Spacing in CJK** - Adds one dot-width of spacing between characters.
- o **Enhance Word Wrap** - Prevents some special CJK symbols from being placed in an inappropriate location, such as straddling a line break. For example, CJK symbols like ",?!" will not appear at the beginning of a line, nor symbols like "<[" at the end of a line.
- o **Hide Underlines of Text** - Makes the text display more clearly.
- o **Sort Records in CJK** - Sorts records in order of the Chinese, Japanese or Korean character set rather than alphabetical order. When CJKOS is activated or deactivated, the record order is re-sorted accordingly.
- o **Enhance FontSelect Dialog** - Eliminates the font selection restriction on the PalmIII or above by allowing any of the four fonts (**Standard, Bold, Large and Large Bold** Fonts) to be selected. A sample of each font is displayed.
- o **Fix Messy Display** - Solves the problem of messy CJK character display in certain software such as "AvantGo". There are two possible causes for such a problem: one is because some of the software wrap lines their own way, bypassing the default system, allowing a CJK character straddling the end of a line to be separated into two parts and placed on two different lines. The other possibility is because the software have their own character-width definition which undoubtedly results in the overlapping display of CJK and English characters. The Fix Messy Display feature can fix it well. For example:
- o **Align** - In the case that CJK characters display messy after repairing for AvantGo channel with spaces between neighbour CJK characters, this feature can help to align CJK characters on neighbour lines in AvantGo. The following illustration is showing how to repair and align the messy characters:

	Case 1 (no space between CJK characters)	Case 2 (there's one or more spaces between CJK characters)

Fix OFF	 CJKOS(Chinese,Japanese,Korean Operation System)將英文PalmOS' 出位際統岸五B日、韓文的多國* y言支撐系統 具體表現看這裡...	 本報訊】對專家及立法會 議員劉慧卿等昨日在保安事務委員會特別會議，批評政府在二〇〇三年便全面換領智能
Fix ON	 Operation System)將英文Palm OS提升為支撐中、日、韓文的多國語言支撐系統。 具體表現看這裡...	 【本報訊】多位專家及立法會議員劉慧卿等昨日在保安事務委員會特別會議，批評政府在二〇〇
Fix ON & aligned		 【本報訊】多位專家及立法會議員劉慧卿等昨日在保安事務委員會特別會議，批評政府在二〇〇三年便

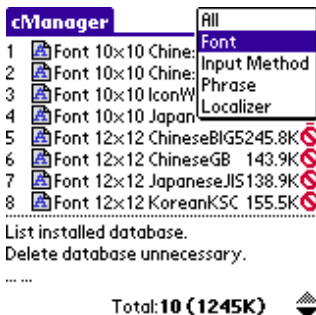
- o **Use CJK Date** - Display Date using Chinese, Japanese, or Korean format.
- o **Localizer** - The Localizer feature. The language is determined by the [System Char Set](#). [Screen shots](#).
- o **Categories** - Localize categories in applications and labels in Address Book. It will take 2 seconds to turn this feature on/off, this feature is optional.
- o **Icon Name** - Localize the Icon Name of applications.

Input Methods Setup:




- o **Enable CJK Keyboard** - Switches on Input Function.
- o **abc,123** - Selects either the "abc" or the "123" area of the Graffiti entry area, or both, to activate the CJKOS keyboard, so that the other area can be reserved for another use such as the strap-on Handwriting Input Method.
- o **Input Method** - Select Input Method.
- o **Dbl. Tap** - In active field, double tap to start up Input Method.
- o **Lookup [Input Method] Code, Input** - Looks up the code for a word under a specified Input Method while entering the word with a certain Input Method. If "Input" is selected, the codes will be automatically entered into the editing area.
- o **Seek at once** - Shows word selections while a code is being entered. If not selected, word selections are not displayed until the user enters a "Space" to indicate end of word.
- o **Auto Send** - When there is only one possible word for the given entry code (according to the current Input Method), automatically enters that word into the edit field.
- o **Show Hint** - Displays the rest part of the entry code for each possible word in the selection line-up.
- o **Phrase Input** - [Phrase Input](#) feature. (See also)
- o **Phrase Association** - [Phrase Association](#) feature. (See also)
- o **Reverse (Phrase Association)** - [Reverse-Association](#) Feature.(See also)
- o **Smart Prioritize Word, Phrase** - Dynamically sorts the selection line-up of candidate words, so that the words or phrases that have been selected more frequently are placed earlier in the line-up. Note: If you request to apply the feature to reorder phrases, be sure not to put phrase databases into ROM.
- o **Match Precisely** - Turn off approximate matching, so that only words which precisely match the input codes are listed, making word entry more efficient. This feature is more useful in Input Methods where most words do not share identical codes (such as "WuBiZiXing", "Cangjie") etc, [Shape Encoding Type](#).

CJKOS Database Manager:

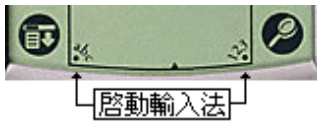


click on the icon  to start "CJKOS Database Manager".

This application Shows the name, type, size, status and any other database information, you can also read them according to the categories.

If there's a **rubbish bin**  icon next to a database, you can erase the database by clicking on the icon; however, be sure to leave at least one font database available.

Start Input Methods:



- Tap on "abc" or "123" on Graffiti area to enter "Input" mode.
- In active field, double tap to start up Input Method.
- Use an external keyboard to turn the Input Method Interface on/off. The key combination for the GoType keyboard is "**Command+Space**", the key combination for the Palm Portable keyboard is "**Ctrl+Space**".
- Use the Graffiti stroke "Command + Space" to turn on/off the Input Method Interface.
- The [System Char set](#) determines the Input Methods and phrase databases available. For example, when the default system Char Set is set to Traditional Chinese, only Traditional Chinese Input Methods will work.

Input Methods Interface:



Note: For each feature below, a corresponding key combination for an external keyboard is given. For example, the key combination "Command+A" means to press "command" and letter "A" altogether.



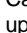
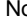
For the Palm Portable keyboard, please substitute the "Command" key with "Ctrl".

Tool Bar

- | | |
|----------------------------|----------------------------|
| Cut | Delete Phrase(s) |
| Copy | Get Custom Phrases |
| Paste | Select All |
| Delete | Get Codes |
| Undo | Make English Address |
| Font | Go to Top of Page |
| Add Phrase(s) | Go to Bottom of Page |
| shift to No.2 tools column | shift to No.1 tools column |
| Enter | |
| Space | |

Other Buttons

	Select Input Method - Select the Input Method.
	Letter/Digit Keyboard - Activate "Letter/Digit Input" keyboard (the default system keyboard). You can also switch on the system default "Letter/Digit keyboard" by tapping on "abc" or "123" area on Graffiti while the "Input Method" display is active.
	English/CJK Switch (Command+A) - Controls whether the system considers characters entered (by Graffiti or external keyboard) to be English characters or Input Method codes. With the CJK icon displayed, the Input Method is active, whereas English Characters are entered when the icon is displayed. The Dynamic (onscreen) Keyboard can only be used for Inputting Method codes.
	Half Width/Full Width (Command+Z) - When Full Width is on, letters, numbers and symbols you enter are double-width, so that a character is the same size as a Chinese word. (see: Punctuations and symbols Table).
	English/CJK Punctuation (Command+Q) - When the "CJK Punctuation" feature is activated, various CJK Punctuation symbols can be entered. You can also do this with a Command + key combination, as given in the Punctuations and symbols Table .
	Add space - Adds spaces between CJK words; may help when using programs which don't work well with large strings of characters with no intervening spaces, such as a desktop program that doesn't recognize CJK.
	Dynamic Keyboard Switch (Command+K) - Turns onscreen dynamic keyboard on/off. Turning it off allows more space for displaying edited text. This feature is for experts who are good at using Input Methods with Graffiti or external keyboards.
	Code Delete Key (Backspace) - Tap once to delete the code last entered.
	Candidate Scroll Key (Command+Left or Address button, Command+Right or To Do List button) - Scroll through the candidate word list, one line at a time. In ZhuYin Input method, the " Space " key can also be used to scroll to the next line.
	"done" button - To press this button indicate you've finished inputting.
	Code-Entry Area - shows codes entered.

	Code Clean Key (Command+` [left-top on keyboard]) or click on Code-Entry Area or Enter (In ZhuYin Input method, used as Select First Word Key to select the first candidate word) - Clean all entered codes or display latest-input code and candidate words. When codes are wrongly input, this feature can be used to delete the entire entered code. In the case that a candidate words was incorrectly chosen, it can be used to re-display the last entered code and corresponding candidate words.
	Candidate Word Area - Displays candidate words in queue. When the queue is not empty, matching words in the queue can be entered into Edit Area by clicking on the word itself, or by entering the corresponding candidate word with the help of the Word Select Key or number keys. In some Input Methods such as "PinYin" and "ZhuYin", a numeral, used to specify the intonation, is part of the code; in this case, the number keys can't be used to enter words. However, after entering the number of the intonation, the number keys can still be used to select a word. When there is only one possible candidate word in the queue, it is automatically transferred to the Edit Area. When the candidate word queue takes up more than one line. (that is, there are too many words in the queue to be displayed at once), you can scroll through the list with the Candidate Scroll Key . If the onscreen keyboard is off, an order number is displayed on the top of each candidate word. When the Show Hint feature is set on, the remaining unentered portion of each candidate word is displayed.
	Select First Word - This is the " Enter " key in ZhuYin Input method, and " Space " in other Input methods. This key is used to select the first candidate word in the queue.
	Word-Select Key (Command+Num Key) - Used to input the word with the matching order number.
	First Tone Key (Space) - Used to Input the first-intonation words in the ZhuYin Input Method.
	Punctuation and Symbol Key (Command+ "Keys" in Punctuation and symbols Table) - Used to enter CJK Punctuation and symbols.
	Seek at once Key (Space) - When the Seek at once feature is off, candidate words aren't displayed during code entry until this Key is pressed; otherwise the words are displayed as the code is being entered.
	Query Key - Depending on the particular input method, you can substitute a wildcard character for the part of a code that you are not sure of. This key is generally defined as "?" on the keyboard.
	Separate Key - When entering multiple words (such as with the PinYin or ZhuYin Input Methods), marks the separation between two words where the boundary between the words might be ambiguous. For example, with the PinYin Input Method, the code "piao" can be considered either as a single word "piao" or the two-word phrase "pi", "ao"; both are reasonable and correct. However, to indicate a phrase, the Separate Key is added between "pi" and "ao". This mark is generally defined as the "" key.
	JogDial - Support SONY CLIE JogDial. Candidate words in line:  Press and release JogDial, the first candidate character can be input;  To roll up or down JogDial can Pageup or Pagedown those candidate characters. No candidate words in line:  to roll up or down JogDial can Pageup or Pagedown the editing area.

Additional notes about Input Methods.

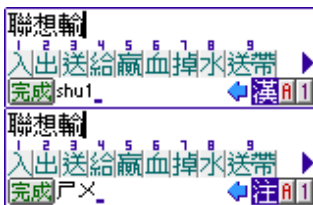
CJKOS Input Methods can be classified into two types, they are: Sound Encoding Type from character' s pronunciation. Generally there're more overlapped codes (with the same codes) for this kind of encoding rule; Another one is Shape Encoding Type from character's shape with less overlapped codes.

The Input Methods of Sound Encoding Type include PinYin, Cantonese, Zhuyin, etc.; Those of Shape Encoding Type include WuBiZiXing, Cangjie, DaYi, etc.

When using Sound Encoding Type Input Methods, you're suggested to trigger on: [Smart Prioritize Word&Phrase](#), [Reverse-Association](#), [Phrase Input](#), [Association Input](#).

When using Shape Encoding Type Input Methods, you're suggested to trigger on: [Reverse-Association](#), [Match Precisely](#), [Association Input](#).

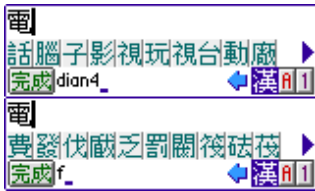
Associated Input



After a word is entered, CJKOS displays possible words which follow the entered word, according to its list of known "phrases" as the illustration on the left. After entering [輸], the candidate words matching [輸] will display in line: 入, 出, 送, 給, 贏, 血, 掉, 水, 送, 帶, just to choose the one you want is okay.

Note: To switch this function on, a phrase database must be installed.

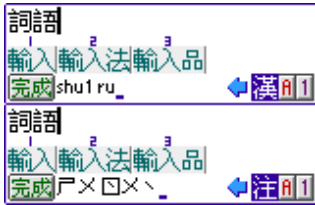
Reverse-Association



Generally, the feature "[Phrase Association](#)" refers to bringing out the second word of a phrase along the first word given, while "[Reverse-Association](#)" refers to composing the currently entering word to a phrase with the prior entered word. i.e, to enter the phrase [電費], with the feature of "[Reverse-Association](#)" off, after entering [電dian4], there are a group of candidate characters that can compose a phrase with the character [電] displaying in line: 話腦子影視玩視台動廠 ▶, in order to search for [費], users have to turn over to the fourth page to get it. But with the feature of "[Reverse-Association](#)" on, you can go on entering the first code for [費], which is [f] in PinYin, [ㄈ] in ZhuYin, then system will automatically put the character [費] to the first position in the candidate word area, because [電] and [費], whose first code is "f" can compose the phrase [電費]. So it can be more efficient for inputting phrases.

Note: To switch this function on, a phrase database must be installed.

Phrase Input



More than one word may be entered at a time. CJKOS searches its Phrase database to guess the words, greatly reducing the ambiguity of entry codes which denote more than one word. As what's been shown on the left, i.e, if you're entering a phrase [輸入] with PinYin Input Method, after you enter the codes [shu ru] of phrase [輸入], the candidate phrase [輸入] will display in the candidate word area.


When you're using [Shape EncodingType](#) Input Methods (i.e, WuBiZiXing, CangJie or DaYi), with the feature [Phrase Input](#) turned on, the Input speed might be not very fast, to trigger on the feature [Reverse-Association](#) will be better.

Note: To switch this function on, a phrase database must be installed.


Manage phrase databases

By now, there have been more than 40,000 phrases enclosed in CJKOS phrase databases. Besides, everyone can make more phrases depending on their own wishes, such as one's name, the name of a firm, addresses or names of product brand, etc. In the old days, phrases could only be added to phrase database by running PhrMan application on PC. Nowadays, it's very easy for users to add or to remove phrases on the handheld devices!

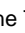
How to add new phrases:



- Input one or more phrases in the MemoPad, then highlight the phrase or phrases with pen.
- In the input mode, click on the icon  of "Add phrase(s)" on the ToolBar.
- It shows: 1 phrase(s) added.
- Start the feature of "Association Input", retype the first word of the phrase you've just added to check if the phrase display at the candidate area below.

How to delete phrases:

- Open a new memo, Input the phrase you'll delete, one phrase on one line. If you only want to delete custom-built phrases, you can get the phrases with the feature of "[Get Custom Phrases](#)".
- Highlight the phrase you'll delete, press the icon  of "Delete Phrase(s)" on the ToolBar.
- A message will pop up telling you how many phrases you've removed successfully.

How to get custom-built phrases:

- Open a new memo.
- Click on the icon  of "Get Custom Phrases" on the ToolBar.
- A message will pop up telling you how many phrases you've picked up, press "OK".

Also you can input the phrases you want to add in the MemoPad in Palm Desktop, one phrase on one line. After HotSyncing to the handheld device, press the icon  of "Select All", click on the icon  of "Add Phrases". If you worry about if all the Custom Phrases will be lost when your handheld device halts or when you have to change a new device, you can backup all the Custom Phrases to MempoPad or electrical book in advance and make a copy in PC; or you can Beam all of your Custom Phrases to your friends who have the same need (i.e, In a company, the product chart can be beamed to all your colleagues to share with.).

Translate Chinese address into English

If you want to know the English expression for a Chinese address, you can try this function. Before you start using it, please be sure you've installed PinYin Input Method. At present, CJKOS support PinYin Input Method popular in China mainland and four PinYin Input Methods popular in Taiwan for this feature. This feature can only be treated as a grope or reference.


The addresses used in China mainland will be shift to only PinYin when they are interpreted into English.

The cases of Taiwan is more complicated. Here are some examples:

ZhuYin 2	Mainly used for the ministry of Foreign Affairs checking passports or some of Taiwan street names.
Wade-Gilos PinYin	Mostly for some of street or person's names in TaiPei.
TongYongPinYin	Commonly for the names of some new streets in TaiPei.
HanYuPinYin	Generally used in China mainland and international application. At present, the ministry of Education have suggested it as the Taiwan PinYin standard.

Since by now, there's still no any PinYin standard defined in Taiwan. Those Chinese Taiwan addresses given in CJKOS can only be regarded as a reference.

How to make an English address:

- o In Input Mode, input a Chinese address in MemoPad.
- o Click on the Input methods square located at the right-bottom, select one of the PinYin Input Method given. i.e, if you want to shift the address with WG PinYin, you can select the WG PinYin Input method.
- o Highlight the Chinese address.
- o Click on the icon  of "Make English adress" on the ToolBar, then the English address matching the Chinese one will display below the Chinese address. The followings are some examples:

中國廣州市天河南一路88號302室
Room 302, No. 88, TianHeNan1 Rd., GuangZhou City, China

台北市中山區合江街31巷3號3樓
3 FL., No. 3, Lane 31, HeChiang St., ChungShan District, TaiPei City


Get original codes

When entering CJK words, maybe sometimes you happen to forget how to spell a certain word, or sometimes, you just want to learn the codes of the word in a certain Input method, then you can use "Get Codes" function. It's also suitable for some specific terms such as the English expression of one's name, or the name of a firm.


How to get codes:

Input a word or phrase in the MemoPad in Input Mode.

Select Input Method for getting codes. i.e. you've entered a few Chinese words with ZhuYin Input method, in order to learn how to spell it in PinYin, you can select PinYin Input Method.

Highlight the words of which you want to get the codes, press the icon  of "Get Codes" on the ToolBar, then you can read the codes you want.

How to use icon words

Generally icons in some applications can be only used in editing data within each application itself. It can't be shared with other applications. Now, as long as you install Icon font and Icon Input method on your device, you can surely paste sorts of Icons into edit area, also you can apply these icons to help to categorize the materials (i.e, to categorize sorts of expense.), play a role as a reminder, secret notebook, etc. It's easy to apply those icons, what you should do is only to enter Input Mode and start Icon Input method, then you can input icons by clicking on your favorite icons on the on-screen keyboard. If you can't find the icon you want, you can press the button  at the left-bottom of on-screen keyboard, and choose the exact one from more than 100 icons shown in the candidate area.

Icon words can only display on TWCS / CJKOS. It's not available for Other system and Desktop PC.

Icon Words Chart :

- ✈ 飛機、航線、班機、空運、機位。
- 🚗 開車、車子。
- 🚌 公車、客運、公路。
- 🚢 坐船、海運。
- 🚚 卡車、陸運、送貨、快遞。
- ☀ 太陽、晴天、好心情。
- ☔ 雨傘、雨天、壞心情。
- ☁ 陰天、雲。
- ♂ 男生。
- ♀ 女生。
- 👕 T恤、衣服、買衣服的開銷。
- 🍷 飲料、酒、食、休息、娛樂。
- 📖 書本、專案、日記、閱讀、研究。
- 💣 定時炸彈、截稿日、Deadline。
- 👥 會議、開會、訪客。
- ☎ 電話、來電。
- ✉ 信件、電子郵件。
- 📄 文件、稿子、報告。
- 📊 統計圖表、股市行情、股票。
- 💻 計算機、財務、總務。
- 🍴 用餐、西餐、吃飯。
- 🔑 鑰匙、私人紀錄、保密。
- 📠 ICQ、通訊。
- 📱 PDA、PPC。
- 💳 信用卡、信用卡開銷、會員卡。
- 📰 報紙、報費、報告、新聞。
- 🛒 購物、雜支開銷。
- 📺 電視、有線電視費。
- 📶 大哥大、通訊、大哥大費用。
- 🖥 iMAC、電腦。
- 🔥 火焰、油費、露營。
- 🔌 瓦斯費、電熱器、加熱。
- 🩸 血液、捐血、石油、油費。
- 🌐 網路費、網路、有線電視費。
- ⚡ 電費、電力、閃電。
- 💧 水費、自來水。
- 💕 愛情、愛心、甜蜜。
- 🎂 生日蛋糕、紀念日。
- 🎵 音樂、娛樂、歌曲。
- ☕ 咖啡、飲料、休息。
- 🚬 抽煙、香煙錢、休息。
- 🐶 狗、寵物。
- 🐱 貓、狼、狐狸、寵物。
- 🕷 蜘蛛、寵物、討厭的人或事。
- 🗑 垃圾桶、想要刪除的檔案。
- 😊 笑臉、開心。
- 😞 哭臉、不開心。
- 👉 手指、注意。
- 🕒 時鐘、約會、注意時間。
- 🗣 會議。
- 💬 聊天、開會、吵架。
- ✉ 信件、Email。
- ☎ 電話、來電。
- 👂 聽診器、醫生、看病。
- 🍷 飲料、喝酒、休息。
- 🍷 飲料、喝酒、休息。
- 👥 訪客、朋友。
- 🖥 桌上型電腦。
- 🖥 iMAC、筆記型電腦。
- 🖥 桌上型電腦。
- 🖥 Server、網路、電腦、資訊部。
- 📓 筆記型電腦。
- 💾 磁片、電子檔、文件、檔案。
- 🖨 印表機、傳真機。
- 🌐 網路。
- 🌐 網路。
- 🌐 網路。
- 🖥 WorkPad c3。
- 🖥 Palm。
- 📁 檔案櫃、文件、檔案。
- 🖱 滑鼠。
- 💻 計算機、財務、總務、記帳。
- 🔄 HotSync、資料同步
- 📅 Datebook、行事曆。
- 🔑 鑰匙、安全、保密。
- 📋 ToDo、待辦事項、備忘錄。
- 🕒 鬧鐘、注意時間。
- ✍ 觸控筆、簽字筆、筆記。
- ✍ 筆、筆記。
- 📁 剪貼簿、素描、筆記。
- 🖨 滾筒、裝潢、油漆。
- 👜 公事包。
- 👜 公事包、購物袋、袋子。
- 👜 公事包、皮包。
- 😊 微笑、開心。
- 😄 笑、快樂。
- 😴 臉、表情、想睡、不以為然。
- 😟 臉、表情、懷疑、不以為然。
- 👕 T恤、衣服、買衣服。
- 🧥 夾克、衣服、外套。
- 📷 V8、攝影機。
- 📷 V8、攝影機。
- 📷 數位相機、照相機。
- 🎬 電影、影片。
- 📷 底片。
- 👥 訪客、會議、聊天。
- 📖 書、筆記本、專案、日記、閱讀。
- 🔩 大頭釘、記事、重要事項、備忘。
- 🎈 汽球、娛樂。
- 🤝 牽手、朋友、約會。
- 📏 尺、度量、製圖。
- 🍚 白飯、吃飯、用餐、午餐。
- 🍷 啤酒杯、飲料、休息。
- ⚽ 踢球、運動。
- 🎵 音樂、休閒、
- 🌸 園藝、買花、種花、休閒。
- 🎬 影片、電影、底片、攝影。
- 👤 人頭、管理者、聯絡人。
- 💡 電燈泡、企劃、點子。
- 🚓 計程車、警車。
- 🔍 放大鏡、研究、搜尋。
- 👟 鞋子、買鞋子、靴子、雨鞋。
- 🗣 歡呼、高興、大叫。
- ✂ 剪刀、簡報、理髮。
- 💡 電燈泡、電力、企劃、點子。
- 📓 記事本、記事、素描簿。
- 📋 待辦事項、備忘錄。
- 🏠 家、房子、房地產、房租、首頁。
- 🔒 鎖、安全、私人紀錄、保密。
- 😴 睡覺、打瞌睡、無聊。
- 🚫 禁止標誌、拒絕、不做事。
- 🔄 符號、迴圈、回收、迴路。
- 🚩 旗幟、棋、國旗、目標。
- ✓ 打勾、確定、注意。
- ✗ 打叉、否定、拒絕。
- 🏆 棋子、里程碑。
- 🌀 符號、指紋、一團亂、迷宮。
- 🔊 喇叭、音響、音樂、大聲說。
- 🐾 寵物、狗、貓。
- 🐾 溜狗、溜寵物。
- 🍷 三明治、午餐、點心、用餐。
- 🍷 瓶子、收藏品。
- 🧔 Sex、關於成人、藝術、裸體、洗澡。
- 🗣 對話、開會、會議。
- 🔧 工具、修理、裝潢、榔頭。
- 🖥 微軟、視窗。
- 🍏 關於Mac。
- 🍏 蘋果、蘋果電腦。
- 🏪 7-11便利商店。
- 🏪 全家便利商店。
- 🏪 福客多便利商店。
- 🏪 萊爾富便利商店、黑心、紅心、愛情。
- 🏪 麥當勞。
- 🏪 肯德基。
- 🏪 漢堡王。
- 👓 眼鏡仔、工程師、學生。
- 👤 老闆、禿頭、不喜歡的人。
- 👤 酷哥、魔鬼終結者。
- 👧 小妹、小女生。
- 👧 開心女孩。
- 👧 不開心女孩、倒楣、被挨罵。
- 👧 小男生、乖乖牌。
- 👧 小胖、高興。
- 👧 大胖。
- 👧 哇、受不了、訝異。

English/CJK Punctuation and symbols Table:

CJK Punctuation Marks	key	notes	CJK Punctuation Marks	key	notes
↖ break mark (no English equivalent)	\		“”quotation marks	"	Auto match
↗ comma	,		‘ ’single quotation marks	'	Auto match
⋅ period / full-stop	.		⟨⟩angle brackets	<	Auto match
⋮ colon	:		《》double angle brackets	>	Auto match
⋮ semicolon	;		(left parenthesis	(
⋮ question mark	?) right parenthesis)	
⚡ exclamation mark	!		• separation mark (no English equivalent)	@	
⋯ ellipsis	^		—hyphen	&	
—dash	-		¥RenMinBi yuan	\$	

Note: CJK Punctuation marks take priority over full-width / half-width.

External Keyboard key combination (and Graffiti stroke) overview:

GoType keyboard	Palm Portable keyboard	Treo180	Description
Command+Space	Ctrl+Space	Option+Space	Toggle the Input Method Interface on/off
Command+A	Ctrl+A	Command+A	English/CJK Toggle Switch
Command+Z	Ctrl+Z	Command+Z	Half/Full Width
Command+Q	Ctrl+Q	Command+Q	English/CJK Punctuation Toggle
Command+K	Ctrl+K	Command+K	Onscreen Keyboard Switch
Command+Num key	Ctrl+Num key		Choose a candidate word by number.
Command+Punctuations	Ctrl+Punctuations		Full-width Punctuation. see the Punctuation and symbols Table .
Command+`	Ctrl+`		Code Clean Key, on the top-left of Keyboard.
Space	Space	Space	This is the "Next Page key" in ZhuYin Input method, "Select First Word" in other Input methods, and "First-tone Key" in "ZhuYin" Input Method.
Enter	Enter	Enter	This is the "Select First Word" in ZhuYin Input method, and "Code Clean Key" in other Input methods.
Backspace	Backspace	Backspace	Code Delete Key.
Command+Left	Ctrl+Left		Shows previous page of Candidate Words; the AddressBook hardware button on Palm may be pressed instead.
Command+Right	Ctrl+Right		Shows next page of Candidate Words; the ToDo hardware button on the Palm may be pressed instead.
Command+U	Command+U	Command+U	Undo
Command+X	Command+X	Command+X	Cut
Command+C	Command+C	Command+C	Copy
Command+P	Command+P	Command+P	Paste
Command+D	Command+D	Command+D	Delete
Command+S	Command+S	Command+S	Select All
Command+F	Command+F	Command+F	Font
Command+R	Command+R	Command+R	Preferences
Command+T	Command+T	Command+T	Go to the Top Page
Command+B	Command+B	Command+B	Go to Bottom Page

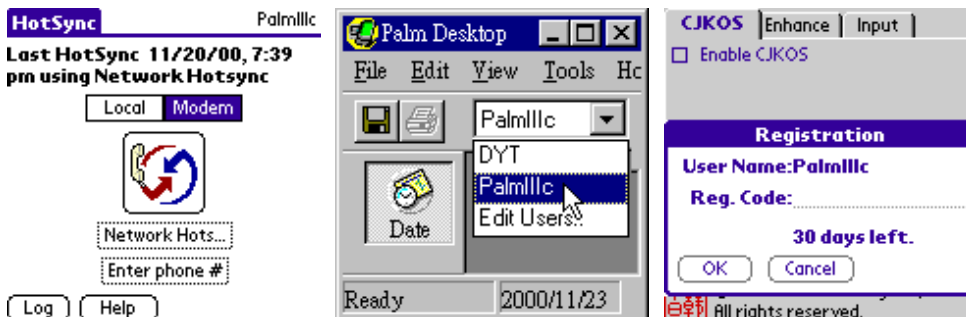
Registration

This is shareware. By registering this software, you not only show your respect for our copyright, but also encourage us to improve and update our work.

1. **Purchase** - Once it expires after 30 days of trial, please refer to the CJKOS registration dialog to find out the website to purchase the software.

Registration code: Upon receipt of your payment, we'll create a specific registration code for you which depends on your [Palm User Name](#). Therefore, you have to tell us your [Palm User Name](#) and your email address, so that we can send you the registration code by email. You should keep the registration code in a safe place. **Note:** If you find your registration code not clear enough to read, please try to enlarge it in the desktop editor. That will be helpful.

Palm User Name (sometimes is called HotSync Name) is the name your Palm device is assigned during HotSync. It is required for code generation. You can easily get your Palm User Name from either the HotSync screen (upper right corner), Palm Desktop or the Registration Dialog of CJKOS. (Just like the illustration below, "Palmlllc"). **Note:** Palm User Name is case sensitive, so please offer the exact Palm User Name for registration code, or you'll get a wrong registration code. i.e, "Peter" and "peter" are different Palm User Names.



2. **Entering Registration Code**

With the legal registration code, call up the CJKOS registration dialog: click on the button [Reg.] on CJKOS screen,



It shows the following registration dialog:



At the location of [Reg.Code], enter your register code. After filling in the code, you can continue to use this software.

► Release History and Updates



4.63 for PalmOS5 - 1/29/2007

1. Provides the Chinese interfaces for Treo 680.

4.621 for PalmOS5

1. Provides the Chinese interfaces for Palm Life Drive, Palm Tungsten X, Treo 650-1.2.

4.621 for PalmOS5 - 4/15/2005

1. Provides the Chinese interfaces for Zodiac 1, Zodiac 2.
2. Provides the Chinese interfaces for Treo 600, Zire 72, Palm Tungsten T5, Treo 650, Tungsten E2.

4.62 for PalmOS5 - 1/1/2005

1. Support Palm Tungsten T5, Treo 650.

4.61 for PalmOS5 - 12/6/2003

1. Provides the Chinese interfaces for Palm Tungsten T2, Tungsten T3, Tungsten E, Zire 21, SONY CLIE PEG-NX73V/U, PEG-NX80V/U, PEG-UX50/U.
2. Changed registration system.

4.6 for PalmOS5 - 7/1/2003

1. Support Chinese GBK.
2. Chinese words in BIG5 can even be displayed in GBK Fonts in the case BIG5 font databases are not installed, but BIG52GBK.PDB is installed,
3. Support feature of "Dbl.Tap". In active field, double tap to start up Input Method.

4.5 for PalmOS5 - 5/16/2003

1. Support ARM-based Palm OS 5.
2. Support Palm Tungsten T, Zire 71, Tungsten C.
3. Support SONY CLIE PEG-NX70V/U, PEG-NZ90/U, PEG-TG50/H, PEG-TG50/J.
4. On ARM-based Palm OS 5, fonts can be put into VFS expansion card. Note: If there is any font has been put on the card, CJKOS cannot startup automatically at RESET.
5. Support Unicode filenames on VFS Card and Quickoffice Premier.
6. Support 2 beol-sik Korean Input Method offered by Sung-ho Han.
7. Fixed the messy screen on Agendus.
8. Other revisions.

4.5 for PalmOS5 beta - 11/15/2002

1. Support ARM-based Palm OS 5, Palm Tungsten T, SONY CLIE PEG-NX70V/U.
2. On ARM-based Palm OS 5, fonts can be put into VFS expansion card.

4.27 - 9/6/2002

Provides the Chinese interfaces for Palm m125/m515, SONY CLIE PEG-SJ20/30.

4.26 - 4/26/2002

Provides the Chinese interfaces for SONY CLIE PEG-NR70/J, PEG-NR70V/J, PEG-NR70/E, PEG-NR70V/E.

4.25a - 1/16/2002

Provides the Chinese interfaces for SONY CLIE PEG-S360.

4.25 - 12/13/2001

1. Provides the Chinese interfaces for SONY CLIE N760C/T400/T600C/T415/T615C.
2. Supports PalmOS4.1, and also provides the Chinese interfaces for the Palm devices running PalmOS4.1 such as Palm III/IIIx/IIIxe/IIIC/V/IX/m500/m505 and Work Pad c3/c5.
3. Modifies the disable of PalmOS 3.5 and higher versions, which using MENU->Edit->Keyboard to launch the CJKOS keyboard.
4. Modifies the errors of the three-word phrases rules in "Wu Bi Zi Xing" input method and turns its soft keyboard into clear letter keyboard.
5. Modifies other mini bugs.

4.24 - 9/5/2001

1. Supported Sony Clie N600C.
2. Supplied newly-made Simplified Chinese 12X12 basic font, the original Simplified Chinese 12X12 font is titled as special Simplified Chinese Song font --- FGB12ST.
3. Solved the problem with some applications to display the directory name on cards like MS with the feature of "Sort Record in CJK" on.

4.23 - 7/22/2001

1. Supported to display CJK characters in auto-writer on ThinkDB.
2. Solved the problem while localizing some of applications on HandEra 330 in CJKOS4.22.
3. Supported the updated version of ROM in HandEra - ENS35629, ENS35712 and ENS35716.
4. Supported WordSmith 2.0
5. Supported Sony CLIE N610C and Sony CLIE 320.
6. Solved the problem of incompatibility with PalmPilot-PalmOS2.0.

4.22 - 6/24/2001

1. Solved the problem of incompatibility in running with PowerRUN.
2. Solved the problem in localizing Address Book on Sony CLIE N700C.
3. Solved the problem with "Support CJK boldFont/largeBoldFont" in CJKOS 4.21 on Palm running Palm OS 3.3 or earlier versions.
4. Updated the localization interface of Launcher on Sony CLIE N700C.
5. Supported to localize Digitizer in prefs.

4.21 - 6/15/2001

1. Solved the problem that the feature "Sort Records in CJK" affected the "Categories" and other features in Palm OS 4.0.
2. Solved the problem that the "Category" and "Beam" feature of Launcher weren't available after applying the feature of "Localizer".
3. Solved the problem that Fatal Error occurred when executing ChCalendar in the HiRes mode in Sony CLIE N700/710c.
4. Now it is able to view HiRes characters in CrsMedoc.
5. Improved the "Fix Messy Display" engine, and solved the problem in its earlier version that using AvantGo to display characters would cause missing lines.
6. Readded the feature of "Wide CJK stdFont & boldFont".
7. Added the Chinese interface of Graffiti exercising in sony CLIE N710C.
8. Some other revisions on the Chinese interface in Sony CLIE N700/710C.

4.2 - 6/2/2001

1. Supported Palm OS 4.0 (Palm m500, m505).
2. Supported HandEra 330 and 16X16 HiRes Font on it.
3. Supported Sony CLIE N700/710C, and 16X16, 24X24 Hires Fonts on it.
4. Updated display engine.
5. Improved smooth selection of text while editing.

Note: To save more RAM, you can select to install one or more preferential fonts. For example, to save RAM, those who are working with Sony CLIE N700/710C don't have to install 24X24 Font.

Note: Those who are running CJKOS should close CJKOS before installing CJKOS 4.2.

4.01 - 12/15/2000

1. Rearranged the candidate characters for CangJie(Easy) and HongKong CangJie Input Methods in order as that in CJKOS 3.21 or earlier edition.
2. Supported Web Clipping including the feature of "Fix Messy Display" available for CJK characters on Web Clipping.
3. Prettified the setup interface of CJKOS on monochrome device.
4. Solved the problem of incompatibility with GoType Keyboard on Palm OS 3.5
5. Restrict the feature of "Sort Records in CJK" only available for built-in applications to avoid the problem of incompatibility.
6. Solved the problem that ActNames can't be multi-executed in SilverScreen.
7. Added Chinese Interface of Graffiti App on Visor Platinum, Visor Prism.
8. Other minor revisions.

4.0 - 12/1/2000

New features:

1. New Input Method Engines
 - o Input speed is 3 times higher than that before.
 - o Candidate words are listed according to the Input Method itself.
 - o Added the feature of Reverse-Association - while entering codes of a character, the associated word which can compose a phrase with its prior word will be located at the front of Candidate Word Area, so that it can speed up inputting.
 - o Get Codes - This feature allows users to highlight a short paragraph of characters and pick up the codes for different Input Methods, it's helpful for one to learn about Input Methods.
 - o Note: The formats of Input method databases have been changed, please be sure to install the latest version of Input Methods to your handheld device.
2. New Phrase Engines
 - o Added the new feature to add new phrases, to delete phrases and to get custom phrases.
 - o Smart Prioritize Phrases - Dynamically sorts the phrases according to the frequency they've been used, so that the phrases that have been selected more frequently are placed earlier in the line-up.
 - o Note: The formats of phrase databases have been changed, Please install the latest version of phrase databases before you take it into use. Those who want to start the features such as "Add Phrases", "Delete Phrases" or "Smart Prioritize Phrase", Please be sure not to put phrase database into ROM.
3. Renew some of the Interfaces
 - o Supports colourful interfaces.
 - o New ToolBar - common functional tools on the ToolBar.
 - o The button of "Done" is put at the left-bottom on Input Method screen, it's more convenient for inputting on Palm.
4. Translate Chinese address into English.
5. Generate Database Manager into a standalone manager application cManager.PRC
6. No sorts classified between CJKOS.PRC and CJKOSF.PRC, CJKOS.PRC itself now can be wrote to Flash ROM.
7. Supports to display CJKOS words with 90 degree ccw.
8. Added the item of "align" in the feature of "Fix Messy Display", so that it can help to align CJK characters on the neighbour lines in AvantGo.
9. Added Icon font database and affiliated Icon word Input Methods for different CharSets.
10. All of CJKOS databases can be stored into Flash ROM, Visor Flash Module, TRGpro CF card or Sony CLIE Memory Stick.
11. Supports Sony CLIE JogDial on the Input Method Screen.
12. Supports TRGpro Chinese Interfaces on OS3.5.1.
13. Supports m100 Chinese Interfaces on OS3.5.1.
14. Supports CLIE PEG-S300, PEG-S500c Chinese Interfaces on OS3.5.1.
15. Supports Visor Platinum, Visor Prism Chinese Interfaces on OS3.5.2H.
16. Added Korean phrase database, Korean Word Input Method and Japanese Harigana and Katakana Input Method under the Korean KSC CharSet. (Special thanks to Sanghoon Rhee)
17. Added Traditional Chinese XuShiZhuYin Input Method.
18. Added Traditional Chinese TongYongPinYin Input Method.
19. Supports HKSCS(Hong Kong Supplementary Character Set), altogether 4702 Hongkong words (there are still a little part of new HongKong font is under construction).
20. Added HongKong CangJie Input Method, so that all Traditional Chinese and 4295 HongKong additional special words can be input. You can only choose one of CangJie and HongKong CangJie.

Improvement and revises:

1. Except for Zhu Yin Input Method using Enter to input the first candidate word, other Input Method use Space instead.
2. Supports Palm Portable Keyboard Driver 1.2
3. Solution for partial display of card sign in BigTwo game.
4. Solution for icon name display problem of applicaton which locates in Flash Module of Visor's Launcher.
5. Solution for occurring Fatal Error while selecting ToDo in ActNames with the feature of Localizer turned on.
6. Solution for failure or halt while beaming address by infrared.
7. New efficient sorting method.
8. Revised the phrasing mistakes in CJKOS 3.21 English documents. (Special thanks for Ka Wai TAM's help)

Note: To upgrade to CJKOS4.0, Please follow the steps:

Disable CJKOS.
 Install CJKOS manager file cManager.PRC.
 Erase CJKOS by clicking cManager->MENU->Delete CJKOS .
 RESET Palm device.
 Install CJKOS4.0

3.22 - 9/15/2000 (not released to public)

1. Added the Chinese interface for TRGPro running on OS3.5.1. (on PalmV,Vx,IIIe, WordPad running OS3.5.1 or OS3.5.2, Chinese interface for OS3.5.0 is of the same use.)
2. While "Enter" is used to input the first candidate character in Zhuyin, "Space" acts as the same role in other Input Methods.
3. Solution on the failure or error when beaming address book.
4. Updated sorting methods.

Note: Be sure to disable CJKOS and RESET your Palm before you begin to install the updated CJKOS.

3.21 - 3/16/2000

1. Supports PalmOS 3.5(PalmIIIc,PalmIIIxe...).
2. Supports Palm Portable keyboard.
3. Added Traditional Chinese PinYin 2 (IMB5PY2F.PDB) and Traditional Wade-Gilos PinYin (IMB5WGF.PDB) Input Methods.
4. Supports Visor Chinese-localized interface.
5. Supports to select either of Graffiti abc or 123, or both of them to start CJKOS keyboard.
6. Solved the problem of incompatibility between CJKOS and StockManager or LaunchAnim.

3.2 - 2/16/2000

1. Added DaYi Input Method For Traditional Chinese.
2. Renewed and recruited Traditional Chinese 12X12 large Font(FB512F.PDB). The previous edition is put into Special Font Category, so that users who enjoyed the old version can apply it along.
3. Prevent messy codes arousing when inputting with input methods.
4. Solved the problem caused during localizing DataBook->Details->Repeat.

3.1 - 1/23/2000

1. Supplies GCCS HongKong 10X10 small font - FHK10F.PDB (3768 words).
2. Repaired and improved GCCS HongKong 12X12 large font - FHK12F.PDB(3768 words).
3. Added Chinese-localized buddies for TRGPro built-in programs.
4. Added 100+ Traditional Chinese popular phrases - PhrB5L.pdb.
5. Supports the feature of "Match Precisely".
6. Supplies the method to identify English symbols associated with temperature in the feature of "Smart Detect Char Set". It is available for both Centigrade^{°C} and Fahrenheit^{°F}.
7. Supplies Array Traditional Chinese Input Method.
8. Improved the feature of localized Icon Name to start Built-in Launcher and Launcher III at the nearly speed of English-Edition.
9. Updates in Chinese-Edition Interfaces: Supplies the Chinese-Edition SMTWTFS in DateBook and DateBk3. To renew terms in the Chinese-Edition DateBook and Mail, Be sure to reinstall Chinese-Edition Buddy of MF_Date_Book, MF_Mail and MF_System.
10. Solved the problem of abnormal bottom lines in some special software (TealPhone, DateBook).
11. Solved the problem in the feature of "Enhanced Word Wrap", which caused the error with only one Chinese punctuation (i.e. "!", "?", etc.) which can't be put at the beginning of a line.
12. Improved "ZhuYin" Input Method to accept phonetic symbol input.
13. Improved all of Japanese Hiragana and Katakana Input Methods to avoid duplicated encoding.

3.0 - 12/10/1999

New Features:

1. Fully support Extend Keyboard (i.e. GoType) Input: Turn on/off Input Methods and administrate Word Input, Word Select, or Punctuation Input...etc. on Extend Keyboard.

2. New Interface for Input Methods: Provide general Edit Buttons, four additive Punctuation Buttons on dynamic keyboard - easily for entering Punctuations, and the way to input punctuations in couple (i.e. “”“”).
3. Add the feature of Smart Prioritize Word - Frequently-used words as the high priority.
4. Improve Input Methods on local rule - This can make Traditional Chinese Input Methods obey the rule of its own, etc.
5. Add simple Input methods for input Hiragana and Katakana - Used to input Hiragana and Katakana in Traditional Chinese, Simplified Chinese, Shift-JIS Japanese, EUC-JIS Japanese.
6. Add Punctuation Input Methods for both Simplified and Traditional Chinese.
7. Add Localizer Buddies for PalmOS3.3, and improve Traditional Chinese Localizer Buddies much better.
8. Offer CJKOS Install Application - Install.exe.

Advance and Improvement:

1. Greatly improved the speed of Input Methods including "Zhuyin", "PinYin" and "Cantonese" to three times as that before.
2. Improved the speed of "Localize Icon Name".
3. Improved the speed of "Localize categories".
4. Set the extend keyboard (i.e.GoType) or Graffiti as Input Methods, or to be used to enter English words. Dynamic Keyboard can be only used as Input Methods.
5. Solve the problem of messy cursor location in PalmOS 3.3.
6. Solve the problem that program "Big Clock" can't work well after the feature of "Localize Icon Name".
7. Improve the Font of Hiragana and Katakana in Traditional Chinese small Font (FB510F.PDB).
8. Solution for entering first-tone in the InPut Method of ZhuYin.
9. Solve the problem of "CharSet=" in the exemplar document made by Input Method Generator (ImeMan.exe).

Note: The Dynamic Keyboard of all Input Methods has been updated, Users should install new Input Methods. Some features have been changed on new interface. Please see the reference on Input Methods Interface get the detailed information.

2.0 - 10/16/1999

1. CJKOS 2.0 provide a Chinese Interface Solution for PalmOS.

1.35 - 10/1/1999

1. Constrain the feature of "Fix Messy Display" function only for AvantGo, so that it has less chance to disturb other programs.
2. Improve the function of "Sort Records in CJK", so that CJK can sort records better avoiding any bad effect from HotSync, RESET, etc. In addition, whenever users start or close this function, CJKOS will resort all databases automatically.
3. Optimize the Database Manager and provide precise digitalrepresentati to keep one digit after the decimal point, such as to show the size of 0.1KB.

1.34 - 9/11/1999

1. Enhance the feature of "Fix Messy Display" more... (1) Solve the problem that there are some words that can't be displayed in full characters in AvantGo, while browsing a certain channel with CJK words separated by a space or mixed with English letters together. (2) Given less chance for binding an extend characters(i.e. "...") and the character on the beginning of next line to a "possible" CJK word. (3) Solve the problem that the "X" sign in the "New Expense" of QuikBudget is displayed as a Chinese character. A little trouble coming with this enhancement is the spacing between English words will be widened in the case browsing English Channels. It's recommended to disable this feature when you're browsing an English Channel.
2. Change the rule of "Display CJK characters without font data as a black box" into "Display CJK characters without font data as what it should be".

1.33 - 9/1/1999

1. A Solution to fix Messy display. it can be used to solve this kind of problem in the software of AvantGo by referring to "Enhance->Fix Messy Display".
2. A solution to arrest the error of "No event handler" while switching between "Input Method Entering" and "Stroke Input", which mostly appear in Input Form without "event handler", i.e. Build-in Find and KDicDA Find, etc.

1.32 - 8/18/1999

1. Improve the engine of "Smart Detect", so that it can identify Simplified and Traditional Chinese better. Besides that, as for the earlier problem that some Traditional Chinese words would be recognized as Japanese kana in Simplified Chinese set have been improved as well. i.e. ChCalendar - A calendar program for Traditional Chinese.
2. Improve on 10X10 small font display in QuickSheet, so that 10X10 small font can be displayed in the cell whose height is just 10 dots in QuickSheet.
3. Solution for missing-bottomline of Large Font Chinese words in ChCalendar.

1.31 - 07/31/1999

1. Improve the speed of picking out Input Methods.
2. Decline system-occupied stacks so that CJKOS can run stably on Palms with less memory (i.e. PalmPilot II)
3. Solution on CJKOS's half-displaying DBCS words in Avantgo.
4. Solution on Icon-displaying in CJKOS Database Manager running on PalmOS2.
5. Update some prompt messages in Database Manager.

Due to the updating work on data structure, It is recommended that users who want to update CJKOS from version 1.3 or lower to 1.31 should set your CJKOS as followings: Disable CJKOS -> RESET PALM -> Install CJKOS.PRC or CJKOSF.PRC -> Enable CJKOS, or you might meet once fatal error, however, it won't make any damaging effect to the System.

1.3 - 07/13/1999

1. Support to install 10X10 small font only to release more memory.
2. No system being halted when something is wrong with the configuration of System Char Set and Display Char Set.

1.2 - 07/03/1999

1. Added Simplified Chinese 10X10 Font.
2. Changed the term of "Active CJKOS" to "Enable CJKOS".

1.1 - 06/26/1999

1. Added Japanese 10X10 Font.
2. Enhanced Japanese 12X12 Font.
3. Enhanced Korean 12X12 Font.
4. Display "Please Wait..." message while starting and activating/deactivating CJKOS.

1.0 - 06/01/1999

The earliest Release is issued on June 1st. in 1999.

▶ FAQ



1. [Can I install a compact size of CJKOS instead of a full one?](#)
2. [Can CJKOS display both Simplified and Traditional Chinese simultaneously if I choose to install either Simplified or Traditional Chinese font database?](#)
3. [Why CJKOS is slow to respond for some certain Input Methods\(i.e. CangJie\)?](#)
4. [Why should it display some black boxes in CJKOS occasionally?](#)
5. [Occasionally, why would it display disorderly after "Smart Detect" is set "on"?](#)
6. [Why would "Large Font" set in MemoPad be changed into "Large Bold Font" when Memopad was restarted?](#)
7. [Sometimes, CJK words display messy in some browsers such as Avantgo, why?](#)
8. [Why would some CJK words be displayed missing the top-line or bottom-line in QuickSheet?](#)
9. [After the feature of "Fix Messy Display" is selected, some of English characters will be displayed as certain CJK ones, why?](#)
10. [Why would the spacing between English words be widened in the case of browsing English Channels in AvantGo?](#)
11. [Occasionally, a chain of Chinese characters which would be wrapped into lines can't be displayed correctly in the Week View of DateBk3, even if "fix messy display" is selected. Why?](#)
12. [Why the CJK characters in some emails transferred from Palm Desktop will be messy, a bug for CJKOS?](#)

1. **Can I install a compact size of CJKOS instead of a full one?**

Certainly you can. Most of resources CJKOS applying are used to store sorts of font databases, Input methods and phrase databases. Therefore, you're recommended to install a compact size of CJKOS, so that you can save a lot of useful and valuable spaces accordingly. You can get more details under the topic of "[Installation sample](#)".

2. **Can CJKOS display both Simplified and Traditional Chinese simultaneously while I choose to install either Simplified or Traditional Chinese font database?**

Yes. This feature is also one of the most powerful and advanced functions in CJKOS. i.e Users can easily view Simplified Chinese while only installing traditional Chinese font database; vice versa. The following is the detailed steps:

- a. To display Simplified Chinese with Traditional Chinese font database supporting.
You should firstly install the code transform table named "GBxBIG5.PDB" and Traditional Chinese font database, and set the item of "Display" to "BIG5", followed by setting "CharSet" to "GB".
- b. To display Traditional Chinese with Simplified Chinese font database supporting.
You should firstly install the code transform table named "GBxBIG5.PDB" and Simplified Chinese font database, and set the item of "Display" to "GB", followed by setting "CharSet" to "BIG5".

Note: To display both Simplified and Traditional Chinese at a time under either condition above, it is requested to set the status of "Smart Detect Char Set" to be active.

3. Why CJKOS is slow to respond for some certain Input Methods(i.e. CangJie)?

This problem is caused by activating the function of "Phrase Input ". To save inputting time , you're recommended to give it up, especially when you're choosing any Input Method based on word-shape and with little multiple-codes, such as the input method of CangJie.

4. Why should it display some black boxes in CJKOS occasionally?

When CJKOS meets a word which is enclosed in the current Charset but there is no word-shape display data for it in the font database of current Charset, it will display a black box instead of the word. This problem may be caused when you've installed the light version of font database for current Charset. In that case, CJKOS can't find the exact font data to display some infrequently words, so it will display black box instead. To install the full version of font database should be an efficient solution for it.

5. Occasionally, Why would it display disorderly after "Smart Detect" is set "on"?

Currently, CJKOS can't recognize Simplified(GB) and Traditional(Big5) Chinese words perfectly, especially while only a few words should be displayed at one time.

A good solution for this problem is to install the database of GBxBIG5.PDB, which can help CJKOS to identify these two kinds of Chinese words well.

Since V1.32 of CJKOS, it's been improved much on this. Now, the accuracy of identifying CJK sentences can reach to 99.9% or even higher.

6. Why would "Large Font" set in MemoPad changed into "Large Bold Font" when Memopad was restarted?

Generally, it is caused when you're running PalmOS 3 on some palm PDA products, such as Palm III or higher than that. For Memopads in these products, "Large Font" is forbidden to use and will be changed to "Large Bold Font". Therefore, "Large Font" you've activated can only work till you cancel MemoPad.

7. Sometimes, CJK words display messy in some browsers such as Avantgo, why?

In Avantgo, there might be two possible causes as following:

- 1) Due to that some of CJK words only displays half of their shapes.
- 2) Due to that half of a CJK word might be wrapped to a new line.

For the above two cases, the first problem has been solved in CJKOS v1.31, while the second one solved in CJKOS v1.33. The second one is a typical fault when applying Chinese, Japanese or Korean words on a system platform on the basis of English-language. Avantgo manage wrapping lines in its own way, passbying the default system platform, so that the last CJKOS word at the end of a line might be split into two parts, and be located separately on different lines. The feature of "Fix Messy Display" can be used to solve the above two problems.

8. Why would some CJK words be displayed missing the top-line or bottom-line in QuickSheet?

In QuickSheet, when you brighten one cell which is enclosed a CJK word, and turn to select another one, the topline and bottomline of the CJK word in the first cell will become two space lines, that you can't see this kind of CJK words clearly. It is caused by QuickSheet itself. Even it is the same for some English letters such as "pqgyj", you can try to refresh the active electric form to improve it.

9. After the feature of "Fix Messy Display" is selected, some of English characters will be displayed as certain CJK ones, why?

In some of English version software, Extended characters in PalmOS might be programmed as specific symbols(i.e. TM,(C), etc.). It is very possible for these symbols located at the end of a line have chance to combine with the first letter at the beginning of the next line to be a Traditional Chinese or Shift-JIS Japanese character. By now, the feature of "Fix messy Display " still can't solve this problem very well. However, you can enable or disable this feature freely for help.

10. Why would the spacing between English words be widened in the case of browsing English Channels in AvantGo?

Generally, it comes to appear because you choose to enable the feature of "Fix Messy Display". Nowadays, It is a lack of the feature of "Fix Messy display". It is recommended to disable this feature when you're browsing an English Channel.

11. Occasionally, a chain of Chinese characters which would be wrapped into several lines can't be displayed correctly in the Week View of DateBk3, even if "fix messy display" is selected. Why?

Such a problem is alike to what occurs in AvantGo. After DateBk3 wrap lines, it will display them one by one in reverse order, that is, it will begin displaying from the last line to the first one, in order to decline every line's height, so that it can display as many lines as possible in a screen. By now, no appropriate solution has been given yet.

12. Why the CJK characters in some emails transferred from Palm Desktop will be messy, a bug for CJKOS?

Generally, E-Mail application running on Desktop can support many format standards (i.e. uuencode, MIME, text, HTML, HZ, etc.). After a mail file is filtered by a specific mailing application, CJK characters in the mail file should have been changed so much, that only those applications that support the same format standard could make those characters readable again. The mailing application on Palm is just a simple one in the term of functions. Therefore, when it meets a mail with an unknown format standard, it will treat the mail in a common format, that is why it makes some CJK characters unreadable in some mail files. As a suggestion, you'd better to try to apply the common format rather than some special ones(i.e. MIME, HTML, HZ, etc.). Besides that, users can try to find other ways to avoid such troubles in your application.

CJKOS only supports to display CJK characters without any transformation on any mails, so it couldn't be the reason why causes E-Mail messy.

► Future Plans

Please feel free to give us any suggestions.

► Disclaimer and legal stuff

This Programme is shareware. You may distribute it without modifications and not for profit-making purpose.

Please contact us if you want to modify it or use it for commercial purposes.

We take no responsibility for any loss of data or other failures. Once you run this program, you are assumed to have accepted the above terms.

► Contact

If have any comments, please e-mail to palm@dyts.com

Thanks!

Du YongTao's Studio

<http://www.dyts.com>

Copyright(C) 1999-2007 by Du YongTao's Studio, All rights reserved.